

The GPTN Newsletter is published quarterly and is distributed to GPTN members and other interested parties.

For more information, contact: Elaine Hammer, 402-477-0242, or [www.gptn.org](http://www.gptn.org)



# Great Plains Trails Network

P.O. Box 82902 • Lincoln, NE 68501-2902

Return Service Requested

PRSR STD  
US POSTAGE  
PAID  
LINCOLN, NE  
PERMIT NO. 433



# Great Plains Trails Network

Fall 2021

Issue 145



## Annual People for Bikes City Ratings How does Lincoln Compare?

Each year, People For Bikes conducts a data-driven analysis to evaluate and compare bicycling in U.S. cities and towns. This year's rating process has been revised to be scored on a 100-point system.

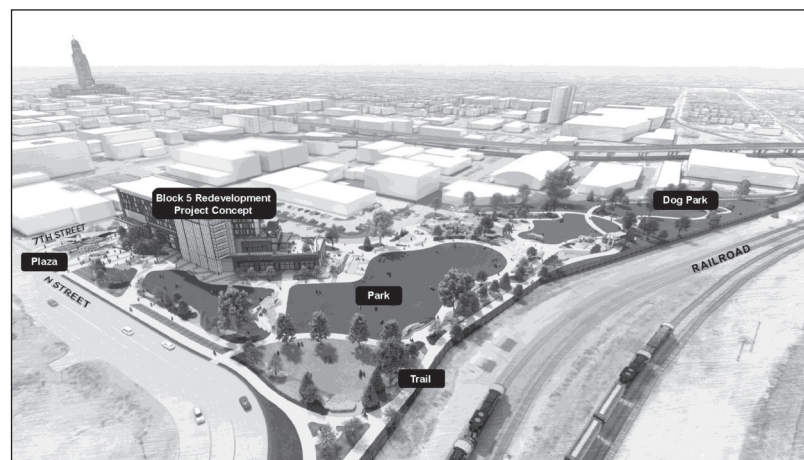
The revised City Ratings incorporate two inputs: the quality of a city's bicycle network through its Network Score, and community perceptions of bicycling via the Community Score. The Network Score comes from the People For Bikes

Bicycle Network Analysis and the Community Score comes from the People For Bikes Community Survey.

So how did Lincoln do? Out of 767 U.S. cities, Lincoln came in at 213 in the overall ranking and in mid-size cities, Lincoln placed 91 out of 342 cities. Below are Lincoln's scores for the Network and Community categories. To learn more about the ratings, go to: <https://cityratings.peopleforbikes.org/ratings>

### Chris Beutler Trail

In the future South Haymarket Park, the Chris Beutler Trail will connect the N Street Protected Bikeway to the Jamaica North Trail at J Street. Estimated cost for the trail and easements is \$275,000. GPTN in partnership with NTF is raising funds to support this critical trail connection. Please consider donating to this exciting project. Thanks!

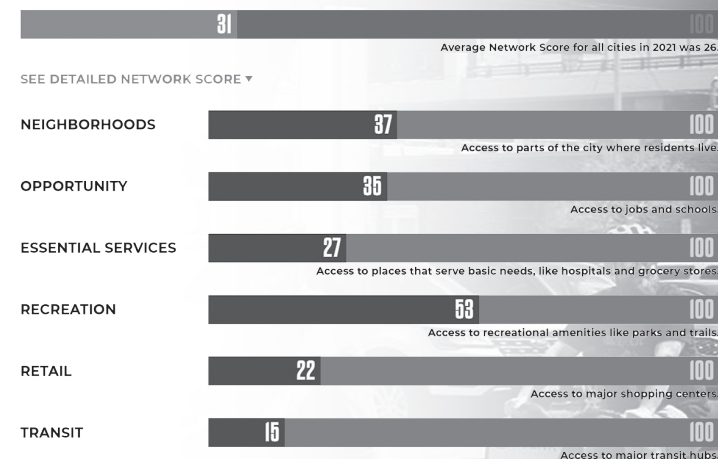


Make contributions payable to:  
Nebraska Trails Foundation

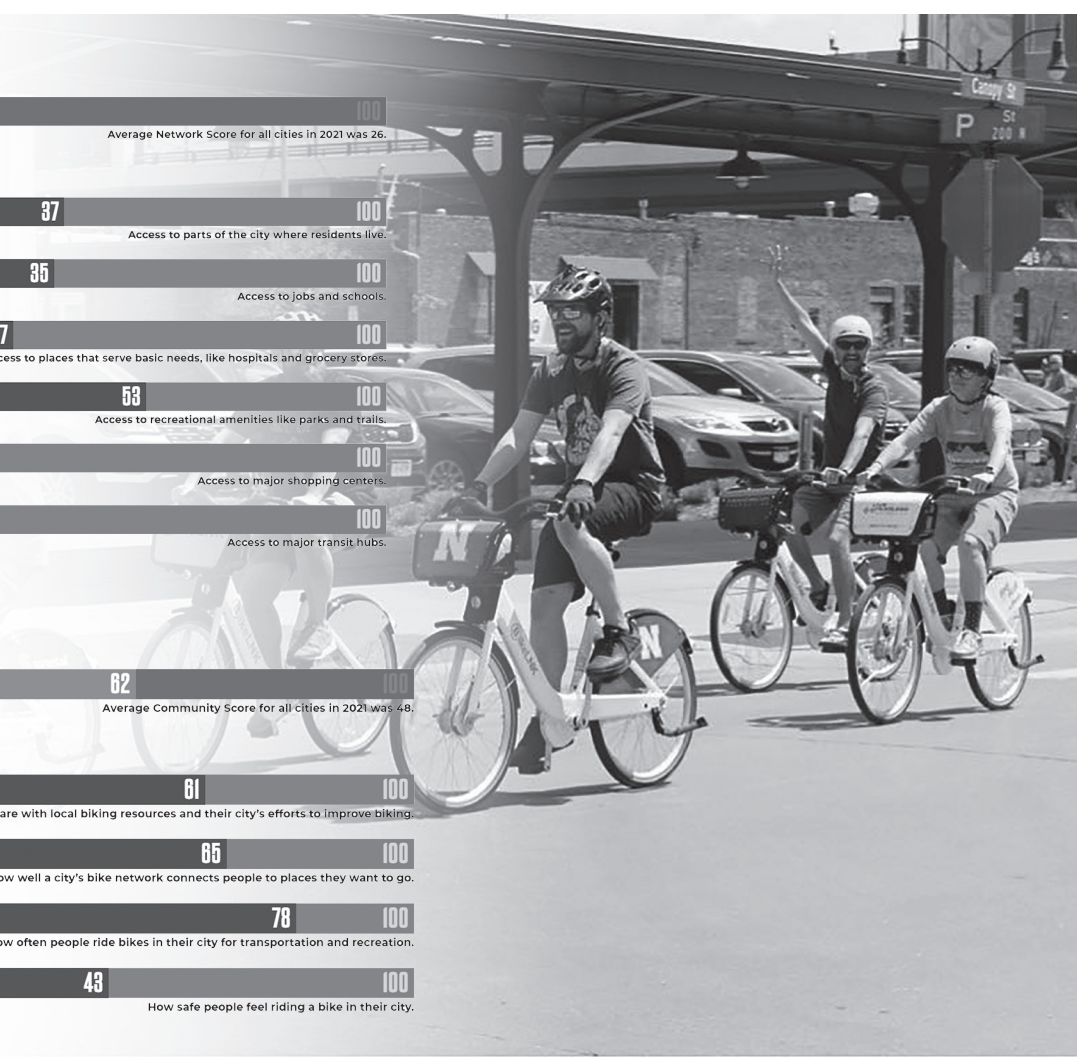
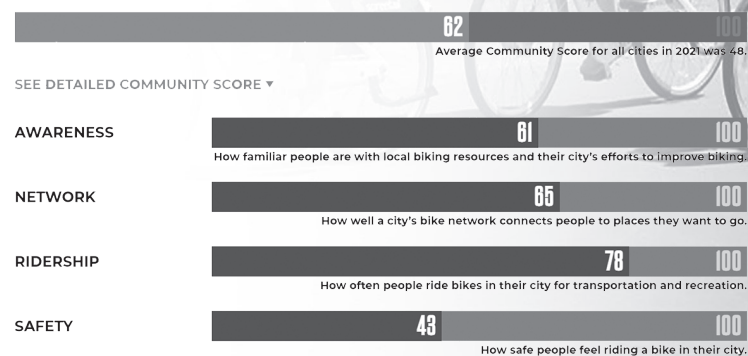
Name: \_\_\_\_\_  
Address: \_\_\_\_\_  
City, State, Zip: \_\_\_\_\_  
Designated Project: \_\_\_\_\_

Mail to: GPTN  
P.O. 82902  
Lincoln, NE 68501-2902

### NETWORK SCORE



### COMMUNITY SCORE







# Great Plains Trails Network

since 1988

*dedicated to the goal of developing a network of commuter and recreational trails within Lincoln and Lancaster County*

2021

**PRESIDENT** Jim Krieger  
**VICE PRESIDENT** Jordan Messerer  
**SECRETARY** Bill Wehrbein  
**TREASURER** Sue Ferguson

### BOARD OF DIRECTORS

Marybell Avery	LaDonna Little Elk
Gary Bentrup	Jordan Messerer
Noel Briseno	Jerad Morris
Dwight Brown	Dena Noe
Kyle Clouston	Jesse Petersen
Parks Coble	Ann Ringlein
Doug Dittman	Roy Rivera
Sue Ferguson	Shelby Robinson
Eli Frank	Greg Rosenboom
Corey Godfrey	Ray Stevens
Jamie Granquist	Denise Teahon
Marynelle Greene	Mary Torell
Rachelle Hadley	Jamie Warren
Elaine Hammer	Bill Wehrbein
Jim Krieger	Ken Winston

### MAILING ADDRESS

**P.O. 82902**  
**LINCOLN NE 68501-2902**  
**WWW.GPTN.ORG**

Newsletter comments, questions, corrections  
gbentrup68@gmail.com

## A Note from the President



As the season shifts to fall in Lincoln, I think back to what an amazing last few months we've had making connections on the trail.

Despite weather delaying the first two weeks, The Hub and Soul Concert series was an amazing success. A big thank you to Hub & Soul, Susan Larson-Rodenburg, Doug Dittman, Cornhusker Bank, all our volunteers and everyone else that made this great event happen. Through it, we were able to raise \$10,000 towards our fundraising goal for the Beutler Trail in the West Haymarket.

We also had the Market to Market Relay use our trails and celebrated Streets Alive with a booth. There was one week where all these great events happened within a few days of each other, and the help of many, we pulled it off. I can't thank all of our members and volunteers enough for staffing all of these events and making a great impact on our community and our trails.

Even with the days getting shorter, fall in Lincoln is a beautiful time to make connections out on the trails. The air is crisp. The leaves crush under foot. Make the most of it. As the holidays approach, please remember GPTN in your giving. Maybe give a gift membership to your friends as a stocking stuffer. Memberships start at only \$10. As this year closes out and we look forward to what next year might hold, we are working towards Building New Paths.

Jim Krieger

## GPTN NEW & RENEWING MEMBERS

August 6, 2021 - October 31, 2021

### Standard \$10

Donn Atkinson, Chris Calkins, JoAnn Churley, Priscilla Handy, Arnold Hottovy, Chris Marvin, Suzanne Schied, Kat Shiffler, Bill & Sandy Spielman, J.J. Yost

### Associate \$20

Barb & Phil Bohaty, Dick Cumming, Sue Gardner, Jon Hanseling, Brad & Beth Hartman, Pat Lorenze, Lynn Marienau, Eric Matty, Terry & Jan Monk, Peter & Lori Morin, Roy L. Rivera Barcenas, Dalcyce Ronnau, Bob Shriner, C. Robert Wikel, David Wilson

### Trail Sustainer \$50

Gary & Cara Bentrup, Ron & Karen Case, Greg Chubbuck, Kirk & Joan Dietrich, Alice M. Dittman, Terry & Judy

Dougherty, Lynne Fritz, William Glover, Jim & Cindy Luedtke, Jennifer Lyons & Bob Robinson, Glenda Pierce & Jeff Kirkpatrick, LeRoy Sievers & Joyce Furry-Sievers, Nancy & Dennis Stara, Faye Stevens, Sue & Don Sylwester, Carey Taylor & Alison Krohn, Dennis C. Tegtmeier, Rick & Carol Zubrod

### Trail Patron \$100

Larry & Peggy Fletcher, Marynelle Greene, Bernie Lyons, Steve Robb, Stephen Roecker, David Spinar, Dave & Sue Van Horn, Dave White

### Trail Benefactor \$250

Judith & Perley Boucher, Mark & Dee Hutchins, Sarah J. Kohlhof, Shannon Patrick, Vince & Brenda Sutton



**Thank You!**

Image by Cara Bentrup





## Align your principal with your principles.

Learn more about SRI investing.  
Sustainable. Responsible. Impact.

**TYLER MAINQUIST**  
Financial Advisor, CFP®, ChFC, CAP®

402-423-4022  
tmainquist@aicinvest.com  
MainquistSRI.com

Tyler Mainquist is a Registered Representative and Investment Advisor Representative offering securities and investment advisory services solely through Ameritas Investment Corp. (AIC). Member FINRA/SIPC, a registered broker/dealer and registered investment advisor. AIC and Central Financial Services (CFS) are not affiliated. Additional products and services may be available through Tyler Mainquist or CFS that are not offered through AIC. Representatives of AIC do not provide tax or legal advice. Please consult your tax advisor or attorney regarding your circumstances.

# BICYCLINCOLN™

BicycLincoln is a community group that supports and promotes bicycling in the city of Lincoln. Our mission is to provide information and a unified voice for bicycle advocacy in an effort to make cycling in Lincoln more friendly, safe, easy, accepted, and “so that more people bike and bike more often.

Check them out at <http://bicyclincoln.org/>



**RICH RODENBURG**  
REALTOR®, Associate Broker  
Team Lead, Your Team

402.440.7570  
rich@cb-nhs.com  
www.cb-nhs.com



## The Canine Scrub



### Self-Serve Dog Wash

4130 S. 48<sup>th</sup> St  
Lincoln, NE 68502  
(402) 477-2782



[www.TheCanineScrub.com](http://www.TheCanineScrub.com) email@TheCanineScrub.com

**HOURS:**  
Monday - Friday 10 AM – 6 PM  
Saturday: 10 AM – 5 PM  
Sunday: 12 PM – 5 PM



## Ride. Share.

That's what the Great Plains Bike Club is all about. We actively promote bicycling with rides for all levels of riders in and around Southeastern Nebraska.

Weekly rides with a leader | Show 'n go rides  
Ice cream & coffee shop rides | Moon-lit rides  
Hammering training rides | Trail rides

We sponsor the Spring Fling ride in April and Heatstroke 100 in August. We also promote bicycling safety through community-sponsored events. For more information and an on-line application to join the club, go to [greatplainsbikeclub.org](http://greatplainsbikeclub.org).



## Building New Paths

### 2022 GPTN Annual Meeting

by Mary Torell

Please mark your calendars for the 34th Annual Meeting of the Great Plains Trails Network as we continue Building New Paths. The meeting is scheduled for Saturday, February 19, 2022 at 1:00 p.m. at Cornhusker Bank Center in their Community Room at 8310 O Street (84th & O) in Lincoln. (Enter on the north side of the building). The public is invited.

Robert J. Bartja, Park Planner for Lincoln Parks and Recreation, will give a comprehensive report on trails work completed, work in progress, and what trail items are on the horizon in the near future. Following the presentations, GPTN's annual awards and election of the 2022 Board of Directors will take place. Refreshments will be provided.

Lincoln's trails system consists of 135 miles of paved trails, which connect to rural routes that add another 100 miles between northern Kansas and the Omaha area. And additional miles of dirt and mowed trails in wilderness and natural areas.

For more information about the annual meeting, contact Jim Krieger, President of GPTN at 402-840-5398, or visit our website at [www.gptn.org](http://www.gptn.org).



Image by Cara Bentrup

## Carveth Memorial

This fall, a small bridge on the Jamaica North Trail, about a half-mile north of Saltillo Road will be replaced with a culvert. The former railroad span was built decades ago with large, treated timbers, but some are starting to rot from years of moisture. The city already put up orange snow fencing to keep hikers and bikers off the weak side.

The bridge used to cross a Salt Creek tributary, but the flow disappeared years ago, and contractors will replace the bridge with culverts beneath the trail.

The project will cost about \$200,000 with a bike shop owner donating half. Jim Carveth, who owns The Bike Rack in Lincoln and Omaha, was searching for a fitting way to honor his father, who died in March 2019. Dr. Stephen Carveth was a cardiovascular surgeon who developed the heart program at Bryan Health, and started the basic life support system at Memorial Stadium.

“But he also loved birds, and he loved the outdoors,” Jim Carveth said. “A lot of people in the trails community knew about that, and knew I was looking for some way to honor him.”

*Modified from Peter Salter, LJS, 1/9/21*

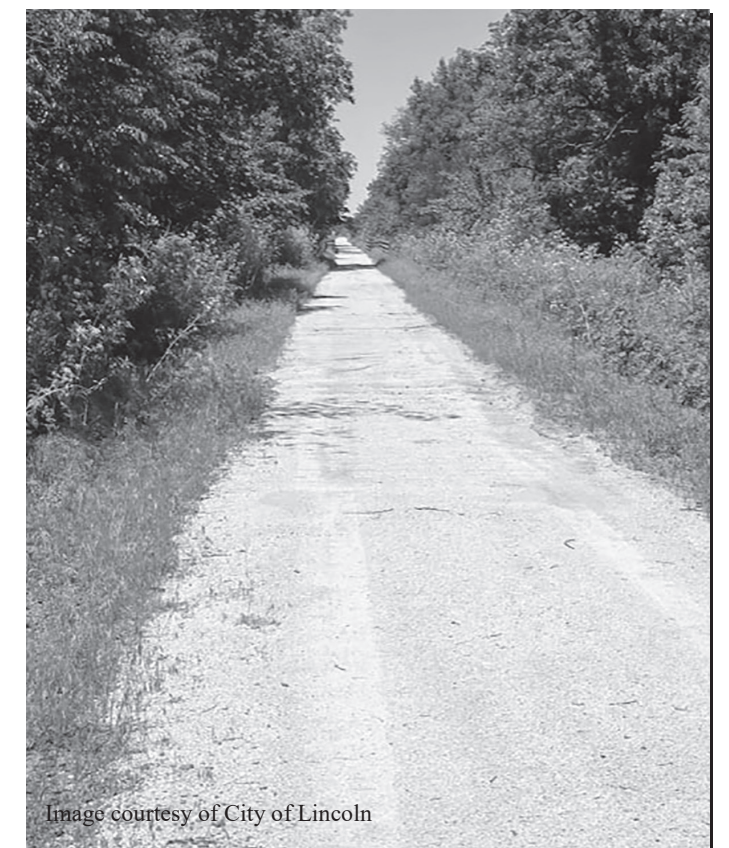
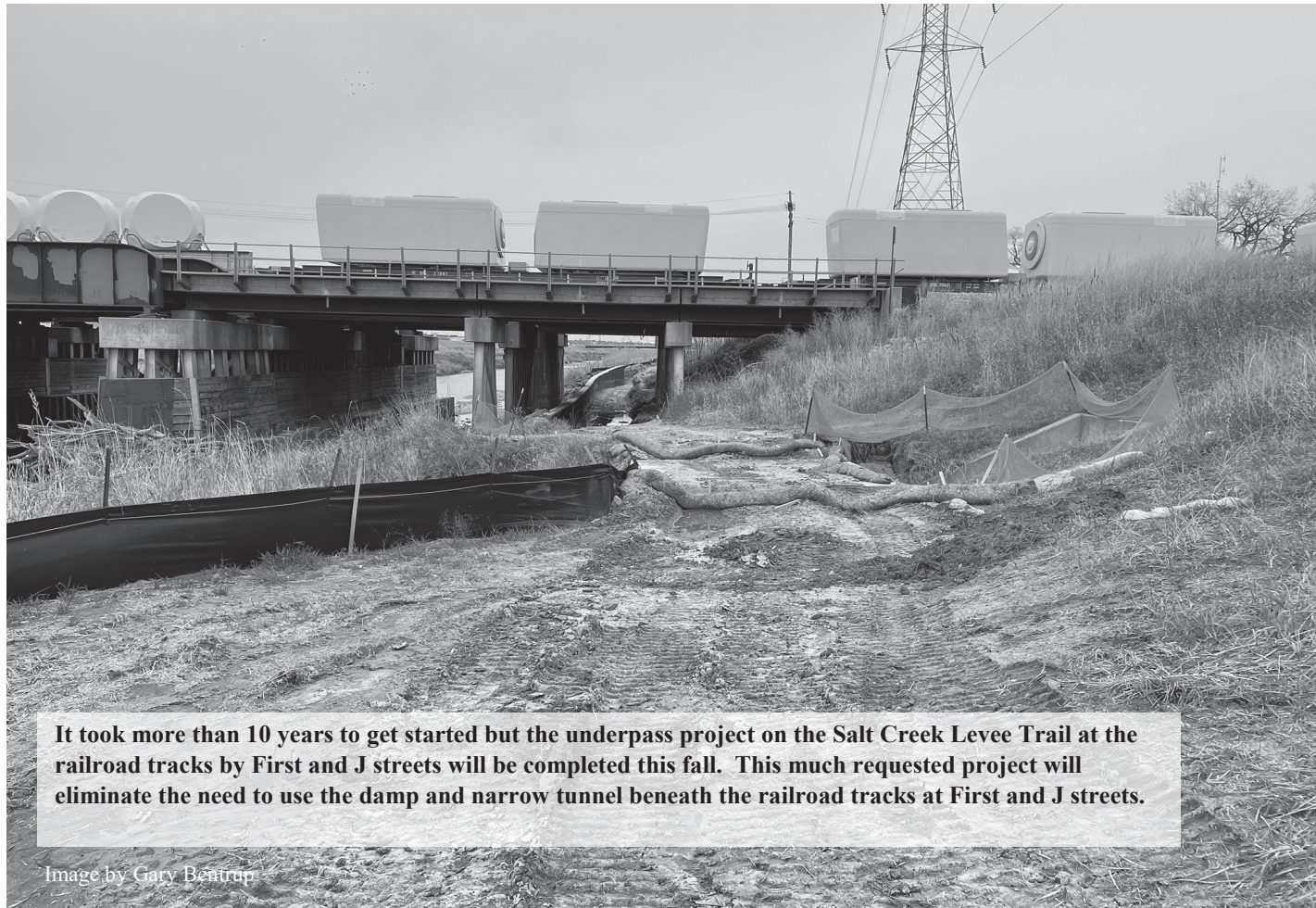


Image courtesy of City of Lincoln





It took more than 10 years to get started but the underpass project on the Salt Creek Levee Trail at the railroad tracks by First and J streets will be completed this fall. This much requested project will eliminate the need to use the damp and narrow tunnel beneath the railroad tracks at First and J streets.

Image by Gary Bentrup



Image courtesy of Susan Rodenburg

## Hub & Soul 2021 Another Successful Year!

This year's Hub & Soul Music Series was another smashing success. Our deepest thanks to the many volunteers, organizations, and businesses that support this event. This is what community partnerships are all about.

The music series averaged more than 400 people each week. Thanks to their generosity and an extra push from a few private donors, more than \$10,000 was raised to support construction of the Chris Beutler Trail.

Private donors include: Acklie Foundation, Alice Dittman, Doug Dittman, The Hub Cafe, Jim Peter and Denise Teahon, Susan and Rich Rodenburg, Stephanie Stacy, Katie Dolan, Jeff and Susan Hertzler and Topher Hansen and Kristi Newcomb.

A special thanks goes out to Susan Rodenburg and Doug Dittman for organizing the Hub & Soul Music Series!

# Lincoln Track Club Membership Application

The Lincoln Track Club, Inc. was established in 1975 by an eager group of track enthusiasts. Although our title contains the reference to track, we have become a distance oriented club. Our membership includes some of the nation's finest road racers as well as a great number of fun runners.

In essence, our club is a nonprofit community service organization, established to promote running throughout this area and provide educational assistance for its runners. Our quarterly newsletter has become an informational running publication for local runners. The LTC is a member club of both the Road Runners Club of America (RRCA) and USA Track and Field.

The Lincoln Track Club is not just about running. It's also about volunteering. This is the one ingredient that makes LTC work. The whole organization is made up of volunteers and we can always use more.

Please consider joining one of Nebraska's finest volunteer-run organizations. LTC members receive entry forms for all LTC races, FastTimes (our newsletter, which is e-mailed quarterly), an invitation to our annual meeting, and a discount of an entry fee for a single LTC road race. All memberships expire at the end of the calendar year (December 31).

**2021 LTC Calendar**

Check LTC Website  
for Current Status

EST. 1975  
**LINCOLN  
TRACK CLUB**

RUN • CONNECT • GIVE BACK

To join the Lincoln Track Club: [www.lincolnrun.org](http://www.lincolnrun.org)

**HUB CAFE**

LINCOLN'S AUTHENTIC  
FARM-TO-FORK CAFE AND BISTRO

250 N 21ST STREET | LINCOLN, NE 68508  
TWO BLOCKS NORTH OF O STREET ON 21ST, JUST EAST OF UNL CITY CAMPUS

**FREE DRIP COFFEE**  
or \$1 off a specialty coffee drink

[HUBCAFELINCOLN.COM](http://HUBCAFELINCOLN.COM) @HUBCAFELINCOLN

## Support Lincoln Trails

By donating to the  
Nebraska Trails Foundation  
through the:



**Community  
Services Fund  
of Nebraska**

[www.communityservicesfund.org/](http://www.communityservicesfund.org/)



## Event Calendar

### February

19—GPTN Annual Meeting—see article in newsletter

### JUNE

26—Trail Trek

## Oak Creek Trail Update

The Lower Platte South Natural Resources District (LPSNRD) Board of Directors awarded a construction contract for the repair of erosion damage along the Oak Creek Recreational Trail, one mile west of Valparaiso, during its regular meeting on Oct. 20.

High water eroded a streambank to a point dangerously close to the trail surface and the trail has been closed at that location since August of 2019.

A construction contract was awarded to High Plains Enterprises, of Martell, for their bid of \$228,070. Olsson prepared plans to stabilize the streambank and realign the trail within the existing corridor and the board also approved a professional services agreement with Olsson at the meeting for construction observation services. Completion of the project is expected in spring 2022.

## National Bike Challenge Champions Once Again

At the end of September, Lincoln cyclists road into the top spot in the National Bike Challenge. The 2021 National Bike Challenge began in May 1 and ran through September 30. This is the sixth year that local riders have finished as the top city in the 150-400,000 population category.

Lincoln cyclists rode of over 458,502 miles beating the second place city of Madison, Wisconsin which recorded 355,025 miles. The State of Nebraska place second in states with 2 million or less residents.

To find out more go to: [lovetoride.net](http://lovetoride.net).

## Trail Updates

**South Beltway construction and utility relocation:** The Jamaica North Trail will remain open during construction, but temporary and periodic closures will be required in the area one-half mile south of Saltillo Road. This is a multi-year project.

**Beal Slough Trail from 56th to 70th St:** Design work continues on the Beal Slough Trail and construction should begin in 2022.



**CAN YOU CATCH THIS GUY?**  
Wouldn't it be fun to try?

**Homestead Trail  
Oak Creek Trail  
MoPac East Trail**

 LOWER PLATTE SOUTH  
natural resources district  
[www.lpsnrd.org](http://www.lpsnrd.org)




## Streets Alive 2021

GPTN served over 250 bike blended smoothies at this year's Streets Alive Festival.

Image by Diane Walkowiak

# BikeLNK

## 2021 September Sponsorship Dashboard

Lincoln bike share riders traveled the equivalent of 184 times from Lincoln to Omaha, saving 545 gallons of gas and 149,101 balloons filled with harmful emissions avoided, all while burning 1,536 cinnamon rolls worth of energy!

Trips	Miles	Carbon Offset	Calories
5,869	10,866	10,288	430,180

**Top Stations**

- 14th & R
- 11th & N
- 21st & Q






# Lincoln's First Bike Boulevard



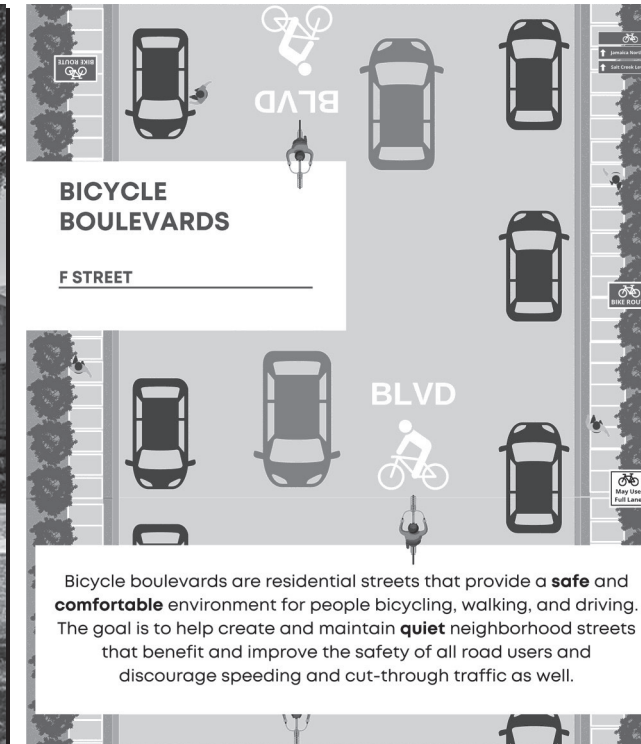
Image courtesy of City of Lincoln

Lincoln Transportation and Utilities Director Liz Elliott today announced that Lincoln's first bicycle boulevard will open in the South Salt Creek neighborhood Sunday, September 26 as part of the Streets Alive! event. The route runs from "G" Street near Park Middle School, follows South Sixth Street south to "F" Street, and continues along "F" Street to South-west Second Street.

Elliott said a bicycle boulevard is a residential street with cycling-specific street markings and signs that allow cyclists to safely share the street with motor vehicles. Bicycle boulevards promote safe, quiet, and comfortable surroundings for people who bicycle, walk, and drive, along with environmental benefits.

"Being able to expand the public's options to enjoy bike-friendly streets shows the City is committed to environmentally-friendly solutions that contribute to Lincoln's Bike Plan and Climate Action Plan," Elliott said. "This is another contributor to assist in decreasing net greenhouse gas emissions while continuing to invest in our neighborhoods and increase the public's quality of life."

Elliott also pointed to studies in Oregon and California that show numerous benefits for neighborhoods where bicycle boulevards are installed. Positive results include creating and maintaining quiet neighborhood streets, decreased traffic speeds, safety for road users, increased comfort level of cyclists, increased quality of life, and air quality.



## DESIGN ELEMENTS

Bicycle boulevards will incorporate **wayfinding and route signage**, along with **pavement markings**.

## BENEFITS

### SAFETY

By reducing motor vehicle speeds and cut-through traffic on residential streets.

### LIVABILITY

By preserving neighborhoods and reducing traffic noise.

### PUBLIC HEALTH

By making it easier to engage in physical activity.

### ACCESSIBILITY

By providing connections that are safe and comfortable.



Roberto Partida, Traffic Engineering Transportation Planner, said the \$4,000 project helps connect the neighborhood to the Jamaica North and Salt Creek Levee trails, Cooper park, and downtown. He said the bicycle boulevard will not affect parking or motor vehicle use on the street. Funds for the project come from the Traffic Engineering Operations and Maintenance budget.

Partida said bicycle boulevards differ from bike routes by utilizing a combination of signs, wayfinding, pavement markings, and traffic calming strategies to optimize the street for bicycle travel, whereas a bike route only utilizes signs to let users know that it is preferred for bicycling due to low traffic or access to destinations.

LTU has also partnered with the Parks and Recreation Department, Partnership for a Healthy Lincoln, and Burlington Northern Santa Fe to revitalize and increase safety and comfortability of the "F" Street pedestrian tunnel under the railroad tracks. Improvements include lighting, a mural, landscaping, drainage, and retention wall repairs.

"The Salt South Creek neighborhood is excited to be the home of Lincoln's first bicycle boulevard that will join two bike trails and show how cyclists, motorists, and pedestrians can all safely use city streets. It is a great addition to our neighborhood and could not have come at a better time following the improvements to the 'F' Street tunnel," said Justina Clark, President of the South Salt Creek Neighborhood Association.

## South Salt Creek Neighborhood | Bicycle Boulevard Project



**Legend**

- F Street Bicycle Boulevard
- Jamaica North Trail
- Salt Creek Levee Trail



For more information on the "F" Street bicycle boulevard, visit: [lincoln.ne.gov/bikeboulevard](http://lincoln.ne.gov/bikeboulevard) or contact Roberto Partida, LTU, [rpartida@lincoln.ne.gov](mailto:rpartida@lincoln.ne.gov).